

Operating Instructions

For

LaZee Mouse Cursor

Thank You for purchasing the LaZee Mouse Cursor! We hope you enjoy working with the newest mouse technology available. We at LaZee Tek strive to build quality products, and want you to be completely satisfied. LaZee Tek technical support is available at (260) 351-3274 if you have any problems with your LaZee Mouse.

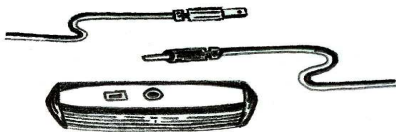
System Requirements

Hardware: Available USB port

Software: - Microsoft Windows™
7, Vista, XP, ME, 2000, or 98
- MAC OSX™ 8.0 or above
- UNIX™ / LINUX / Other
any using standard USB Drivers
- Other compatible USB inputs

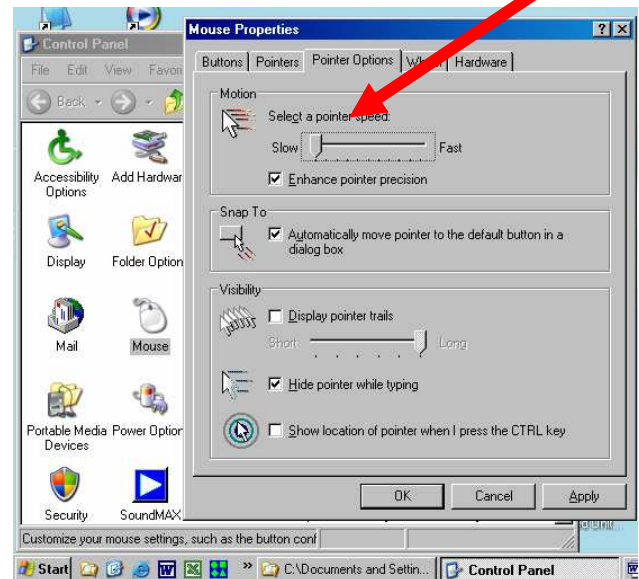
Setup Instructions

1. Begin with unpacking the LaZee Mouse package. Inside you should find:
 - a. LaZee Mouse Cursor
 - b. Headset
 - c. USB Cable
 - d. USB Extension
 - e. Standard Mounting Kit
 - f. Operating & Mounting Instructions
(no switches are included)
2. Connecting the cable(s) to the LaZee Mouse Switch consists of:



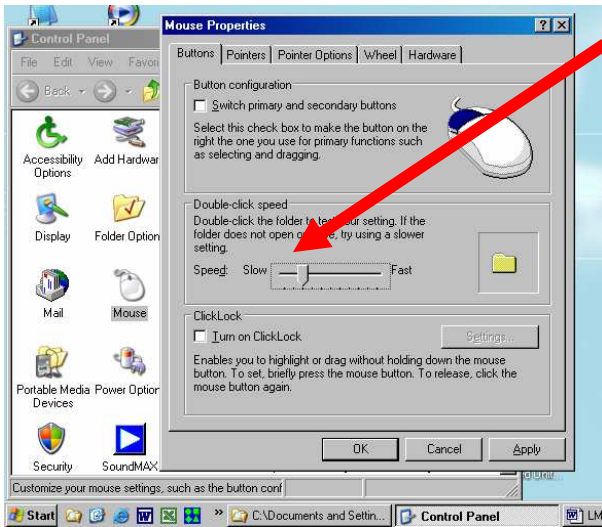
- a. Inserting a switch plug into the 3.5mm input jack on the LaZee Mouse Switch. LaZee Tek products use standard 1/8" / 3.5 mm jacks. If your switch has a different size plug, standard adapters are readily available from numerous electronic and department stores.
- b. Inserting the Mini-B end of the USB cable into the LaZee Mouse USB port.

3. For initial usage of the LaZee Mouse, it is recommended to reduce the mouse speed settings of the computer. While changing these mouse settings are very beneficial when first attempting to operate a LaZee Mouse, it is not a requirement. After the user has become "familiar" with operating the LaZee Mouse at the slower speed settings, they can be gradually increased back to their previous settings. The menu for adjusting the mouse speed can be found:



**Windows Start: Settings: Control Panel
Mouse: Pointer Options: Motion**

4. It is also advisable to reduce the double-click speed. The menu for reducing the double-click speed can be found at:
Windows Start: Settings: Control Panel Mouse: Buttons: Double-Click Speed

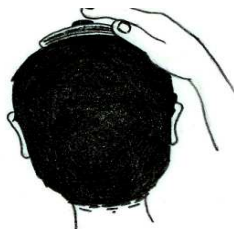


5. With the LaZee Mouse resting undisturbed on a table, plug other end of USB cable into the computer's USB port. (It is OK to plug this in while the computer is powered ON)

Operating Instructions

6. The first time the LaZee Mouse is connected to a computer system, Windows will detect new hardware & recognize the LaZee Mouse as a "Human Interface Device", briefly displaying a pop-up window stating such. After another windows menu shows new hardware is ready for use, proceed to step 7.

7. Place unit on top of head, or other desired location. The LaZee Mouse is designed such that its connectors must be oriented toward the right. Position yourself in a comfortable position where no cursor movement is desired.

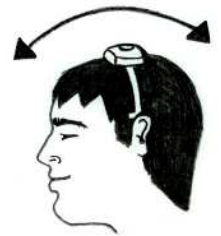


8. While holding steady in this position, gently press and release the set button located on top of the LaZee-Mouse. This is what sets the LaZee Mouse "**home position**". The home position is where the user returns to when no cursor movement is desired.

9. Imagine the head as a joystick, which controls cursor movement. Tilt the head slowly to the right (moving the ear towards the shoulder) until the computer's cursor moves to the right. Tilt the head farther to the right and the cursor will move faster. Return the head to the upright position and the cursor will stop moving



10. Tilting the head back (looking up) moves the cursor up, tilting the head forward (looking down) moves the cursor down. Tilting the head two directions at once moves the cursor diagonally.



11. The LaZee Mouse Cursor accepts a switch input from an external switch, and uses it to reset the "**home position**". This provides an alternative control of the home position, in addition to the built-in switch on the top of the unit.

12. The LaZee Mouse Cursor provides no clicking functionality; however, it is fully compatible with any other hardware or software program that can perform clicking.

13. For support contact (260) 351-3274 or support@lazeetek.com